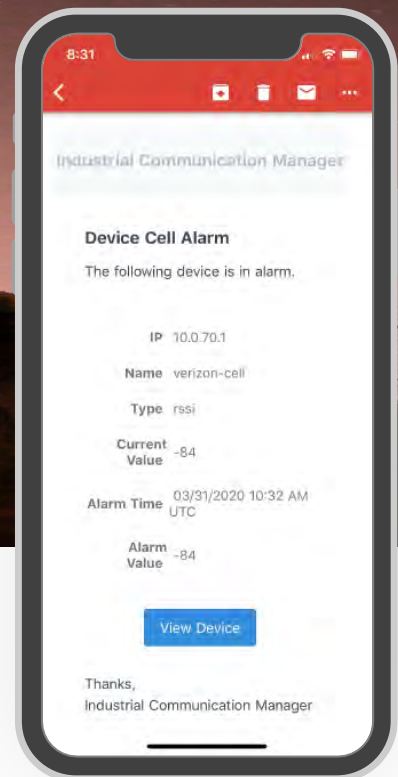
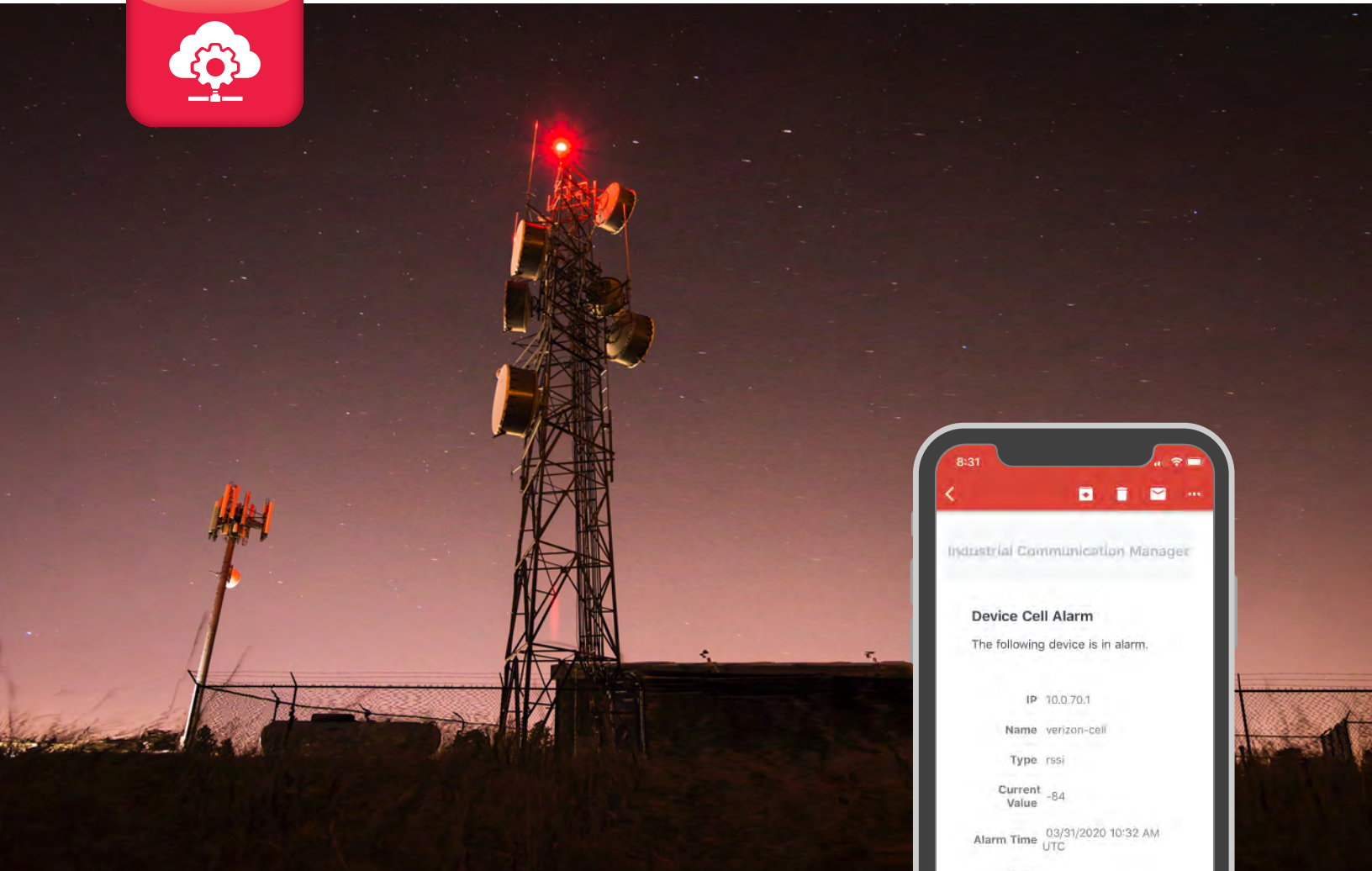


Connect, Monitor and Control for Utilities and Municipalities Operations



Industrial Communication Manager – ICM

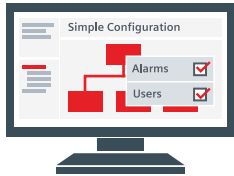
ICM is designed to monitor status of your Industrial 4G LTE and private wireless communication network.

The ICM Appliance is for utilities and municipalities that have critical remote assets in the field for the gathering of data and controlling equipment. Designed for Operations Technology (OT) and is communication enabled for Information Technology departments.

ICM – Zero Software, Web-based Appliance

Gain new insights, take action and improve operations

The ICM solution simplifies connectivity, monitoring and control of your wireless networks, enabling visibility into operating conditions, faster resolution of problems, and the ability to detect trends and conditions that previously were not possible. Combined with advanced analytics essential to accelerating successful IT/OT collaboration, ICM is aimed at enabling network transparency to facilitate informed decisions that improve and ultimately achieve overall equipment excellence (OEE).



Wireless Network Management

Discovers, Polls and Displays

4G LTE cellular or Private Wireless Inventory and device statistics

Comprehensive Dashboard

to provide high level information on overall communication system health and statistics



Modem Asset Management

Enterprise Router Connection

provides enterprise router connectivity to Verizon or ATT private or Public static networks

Device Specific Pages

physical interface flexibility with options for RJ45 Copper, Fiber, T1/E1, Serial



Communication Analytics

Flexible Interface

enables quick drill-down access to locate specific communication devices

Automatic Alerts

for managers, operators and technicians to communicate device status and failures

Built on Best-in-Breed Hardware

Siemens **multi-service platform for critical applications** includes RUGGEDCOM RX1500 Utility Grade Router with APE 1808 Edge Application Processing Engine.



Image: Siemens AG



Signal



Voltage



Resets



Failures



Alarm History



Alarm Config